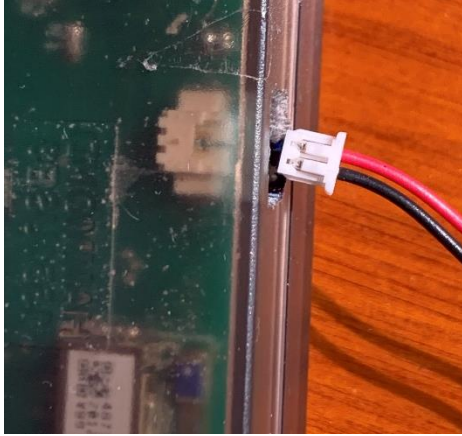


Magic Dongle Charge cable

There is a special cable used to charge an internal battery in the Magic Dongle. On the side of the Dongle there is a 2 pin Pico Blade socket. The charge cable plugs into there. Many people use a charger that is used for single cell LiPo batteries that also has the same style 1.25mm Pico Blade connection.



The cable to connect these looks like this . Note that the Red and Black wires are connected differently at each end



This end should go in the dongle. It is the one that is wired the nonstandard way. See below



The standard way of putting the Positive and Negative (Red and Black) into the Molex Pico blade when you are putting it on a battery as a power source is like this in this picture.

This is the way leads to an internal battery should be done. It is also the way that LiPo batteries with built in 1.25mm connectors are wired. Many chargers support this kind of connection. But if you must change the connector to suit another charger this is the one that should be removed and replaced with the one to suit your charger.